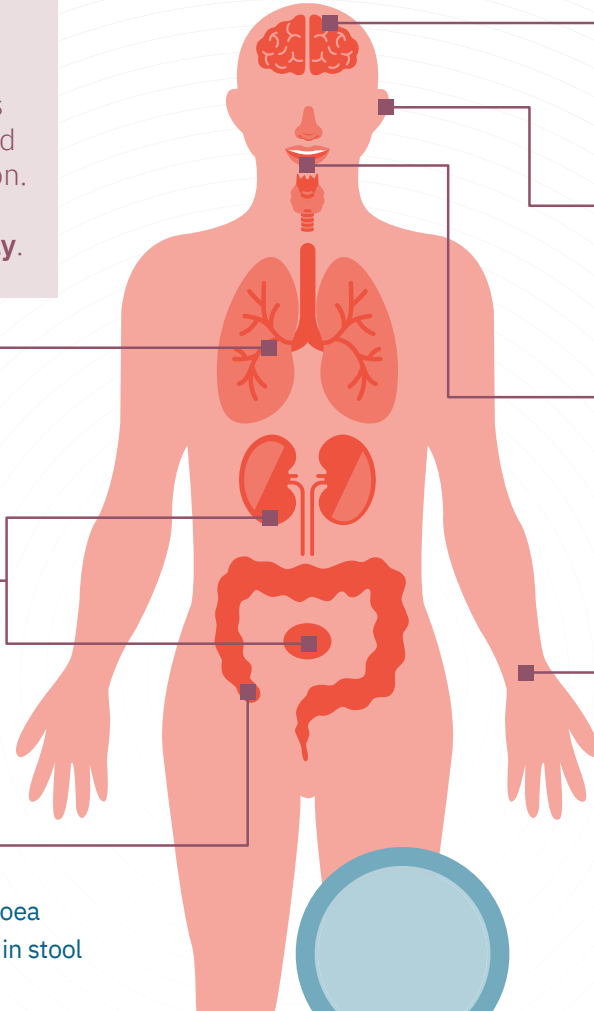


MYELOMA AND INFECTIONS

SIGNS AND SYMPTOMS OF INFECTION

DID YOU KNOW?

Myeloma and its treatments can lower your immunity and increase your risk of infection. **Infection is when germs enter the body and multiply.**



BRAIN & NERVES

- Confusion
- Headache
- Stiff neck
- Sensitivity to light

EARS

- Ear pain
- Reduced hearing
- Swelling
- Ear discharge

MOUTH / NOSE / THROAT

- Sore throat
- White spots on tongue or tonsils
- Mouth ulcers
- Runny nose
- Sinus pain
- Difficulty swallowing

CHEST

- Cough (with or without sputum or blood)
- Shortness of breath
- Chest pain

URINARY SYSTEM

- Burning / stinging when passing urine
- Blood in the urine
- Lower abdominal pain
- Back pain

DIGESTIVE SYSTEM

- Abdominal pain
- Nausea / vomiting
- Diarrhoea
- Blood in stool

SKIN

- Swelling or redness
- Pus or spots
- Painful or itchy rash

TEMPERATURE

Seek immediate medical advice **if you have a fever.**

GENERAL SYMPTOMS

Fever, chills, pain, fatigue and **feeling generally unwell.**

BE SEPSIS AWARE

Sepsis is a life-threatening reaction to an infection. Educate yourself and your loved ones to spot the signs. If you have or see one or more of these symptoms, seek emergency assistance:



Breathing difficulty



Fast heart rate



Confusion



Getting unwell rapidly



Drowsiness



Pale or mottled skin



Shivering or feeling cold



Passing reduced or no urine



Fever