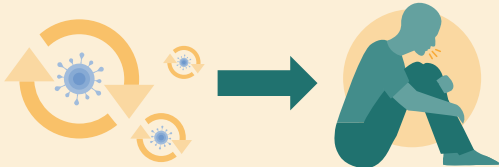


INFECTION RISK WITH MYELOMA AND MYELOMA TREATMENTS

Myeloma patients are 5 times more likely to get infections
when compared with the same age population¹

Infection is when germs enter the body and multiply, making you unwell



1

Myeloma is a cancer of immune cells
(plasma cells)

2

Myeloma and its treatments **disrupt the immune system**

3

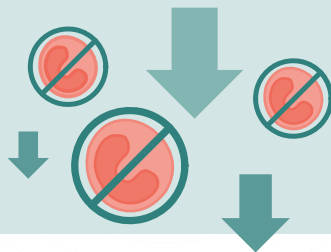
Lower immunity leads to **increased infection risk**

How do myeloma treatments reduce immune function?

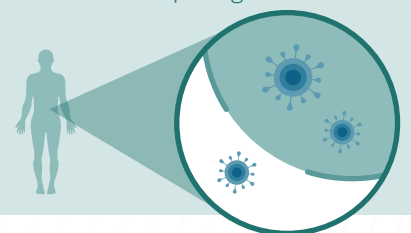
Lower antibodies
(proteins that fight infection)



Reduce immune cells
that fight bacteria and viruses



Damage natural barriers,
like the skin and gut,
that keep out germs



BISPECIFIC ANTIBODIES AND CAR T-CELL THERAPY AND INFECTION RISK

Patients who are taking a bispecific antibody or have undergone CAR T-cell therapy, **have a serious risk of infection.**

These medications can reduce antibody levels and cause the immune system to be less active.

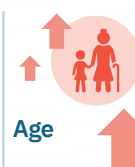
This leads to increased infection risk, especially whilst on treatment.



DISCUSS YOUR INFECTION RISK, AND HOW TO MINIMISE IT, WITH YOUR HAEMATOLOGIST

Infection risk is unique to you...

Everyone has different risks depending on unique factors including...



Age



Prior infections



Pre-existing health conditions such as diabetes or heart disease

And can change over time...

LOWEST RISK

is commonly during **remission or maintenance treatment**

HIGHEST RISK

is commonly at **first diagnosis and relapse**

MPe
Myeloma Patients Europe