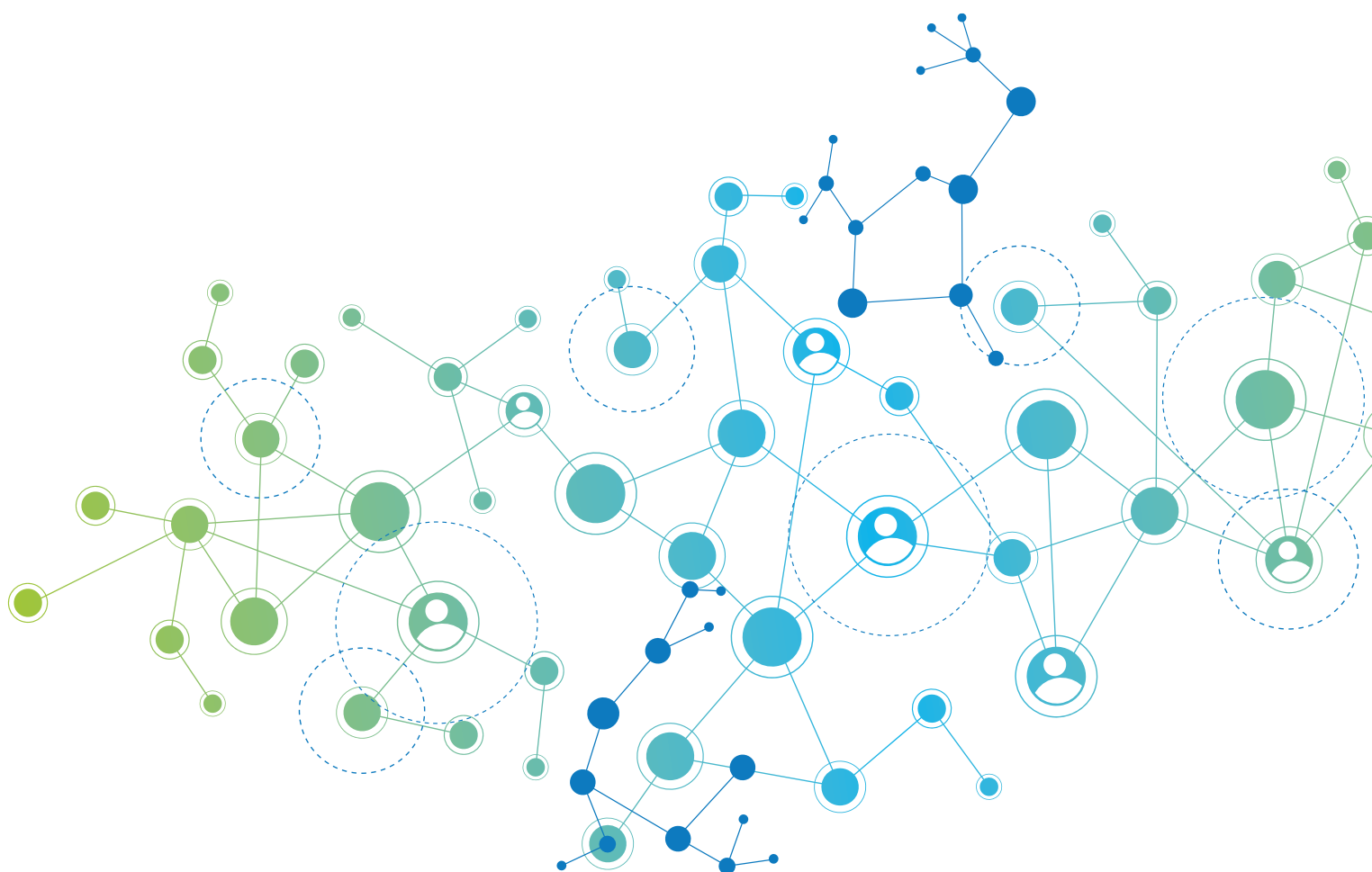


2021 Financial Report



Financial report 2021

MPE is an organisation supported by public and private funding. Most of the financial resources that MPE has, comes from pharmaceutical companies. In addition, MPE receives public funding from its involvement in IMI and Horizon 2020 projects.

1.1 Sponsors 2021

Income 2021	Received Funding / Income Jan - Dec
Subtotal Operative Income	1.167.425 €
Industry Funding	
Amgen	98.358 €
Bristol Meyrs Squibb	120.000 €
GSK	92.263 €
Gilead	19.400 €
Janssen	154.690 €
Karyopharm	50.000 €
Novartis	35.842 €
Pfizer	48.960 €
Roche	65.000 €
Sanofi	70.988 €
Sobi	1.430 €
Takeda	268.895 €
UCB	1.200 €
Total Industry Funding	1.027.026 €
Public Funding and Other Income	
H2020 CARAMBA	21.166 €
H2020 MM PREDICT	4.484 €
IMI HARMONY	19.881 €
IMI SISAQoL	70.875 €
Other Income Non-Industry	23.993 €
Total Public Funding and Other Income	140.399 €

1.2 Income vs. Costs 2021

2021	Jan - Dec
Income	1.167.425 €
Costs	938.001 €
Access, Policy and Regulatory	149.571 €
Research and Clinical Trials	72.765 €
Evidence Generation Unit	51.539 €
Capacity Building and Advocacy	207.071 €
Other Projects and Initiatives	113.836 €
Public funded Projects	69.710 €
Communication	76.143 €
Management, Finance, Operations, Administration	197.367 €
Reserve	0 €
Balance total Income	229.424 €
Takeda EGU income paid in 2021 allocated to 2022	-155.000 €
Balance without allocation to 2022	74.424 €

Myeloma Patients Europe AISBL

Avenue Louise 143/4
1050 Brussels, Belgium

www.mpeurope.org - info@mpeurope.org

Follow us:



@mpeurope



@MyelomaEurope

