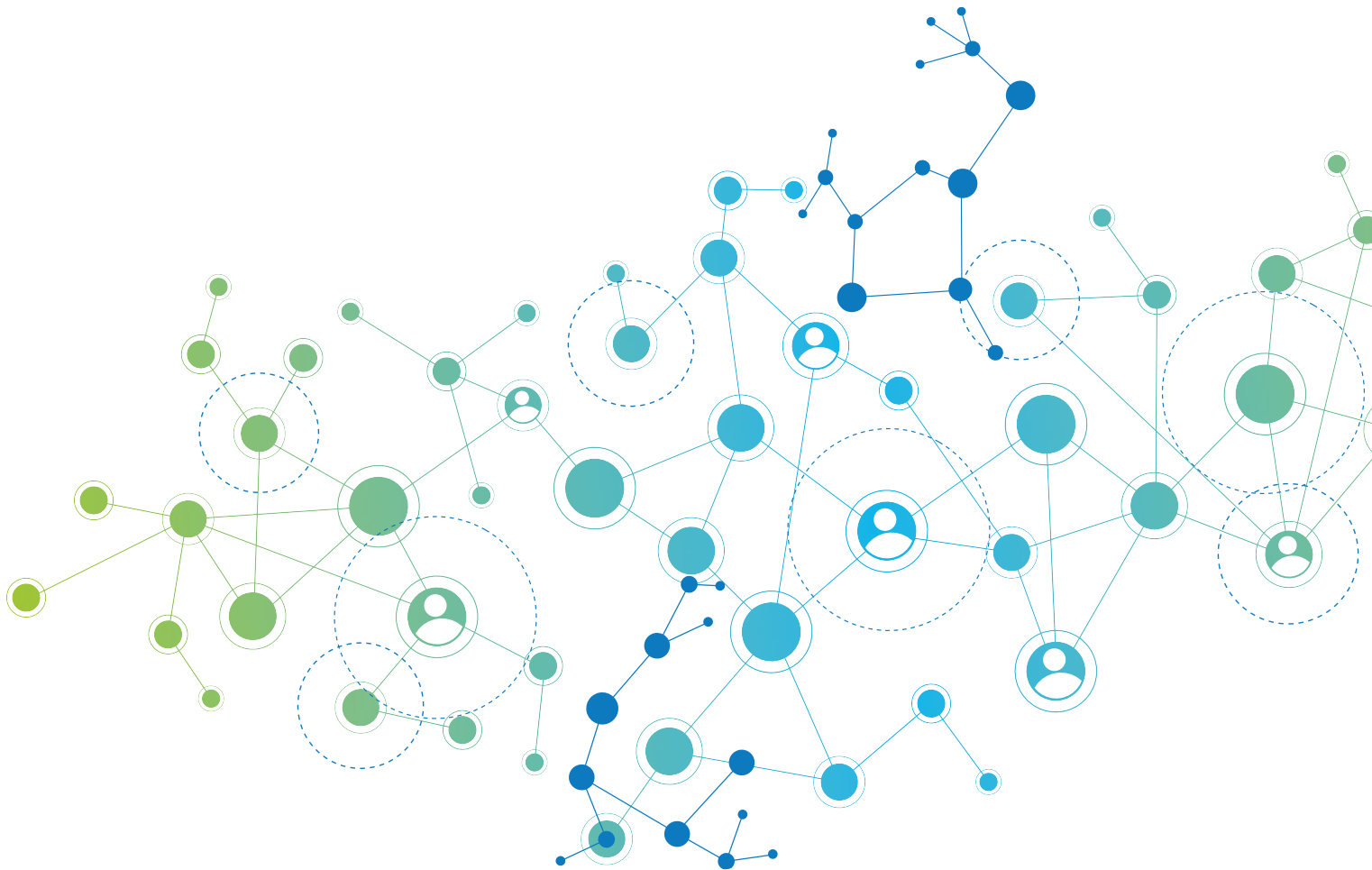


2020 Financial Report



Financial report

MPE is an organisation supported by public and private funding. Most of the financial resources that MPE has, comes from pharmaceutical companies. In addition, MPE receives public funding from its involvement in IMI and Horizon 2020 projects.

1.1 Sponsors 2020

Income 2020	Received Funding / Income
	Jan - Dec
Subtotal Operative Income	1.015.299 €
Industry Funding	
Amgen	103.308 €
Astra Zeneca	10.000 €
Bristol Meyers Squibb	221.226 €
Celgene	525 €
GSK	141.000 €
Gilead	- €
Janssen	93.268 €
Karyopharm	55.000 €
Mundibiopharma	7.000 €
Novartis	65.000 €
Oncoceptides	15.000 €
Pfizer	65.000 €
Roche	53.000 €
Sanofi	65.380 €
Takeda	97.220 €
Total Industry Funding	991.927 €
Public Funding and Other Income	
Horizon 2020 Caramba	- €
Horizon 2020 MMPredict	- €
IMI HARMONY	5.557 €
IMI SISAQoL	- €
Other Income Non-Industry	17.816 €
Total Public Funding and Other Income	23.372 €

1.2 Income vs. Costs 2020

2020	Jan - Dec
Income	1.015.299 €
Costs	835.531 €
Programmes	422.240 €
Other Projects and Initiatives	128.968 €
Public funded Projects	34.814 €
Communication	44.266 €
Management, Administration	205.243 €
Balance	179.768 €

Myeloma Patients Europe AISBL

Avenue Louise 143/4
1050 Brussels, Belgium

www.mpeurope.org - info@mpeurope.org

Follow us:



[@mpeurope](https://www.facebook.com/mpeurope)



[@MyelomaEurope](https://www.twitter.com/MyelomaEurope)

