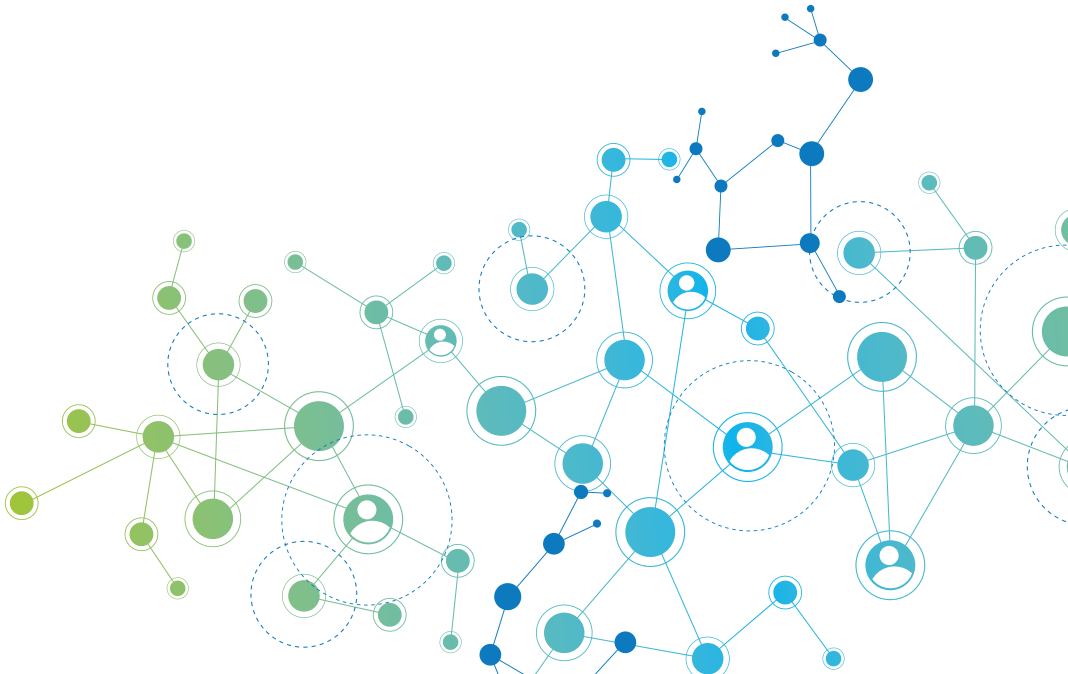


2018 Financial Report



Index – Financial Report 2018

1 Financial report	1
1.1 Sponsors 2018.....	1
1.2 Income vs. costs 2019	1
1.3 Costs per Programme / Project.....	2
1.4 Hem-CAB Account.....	2

1 Financial report

MPE is an organisation supported by public and private funding. Most of the financial resources that MPE has, comes from pharmaceutical companies. In addition, MPE receives public funding from its involvement in IMI and Horizon 2020 projects.

1.1 Sponsors 2018

Income 2018	
Subtotal Operative Income	518.370 €
Industry funding	433.101 €
Amgen	81.598 €
Celgene	100.000 €
BMS	39.495 €
Takeda	55.485 €
Janssen	51.160 €
Novartis	30.000 €
Karyopharm	20.000 €
Sanofi	43.525 €
Other	11.838 €
Public funding and other income	85.269 €
Horizon 2020 CARAMBA	55.885 €
Horizon 2020 MMPredict	0 €
IMI project HARMONY	0 €
Other	29.383 €

1.2 Income vs. costs 2019

Income vs. Costs 2018	
Balance	-9.529 €
Income	518.370 €
Costs	527.898 €
Programmes and Services	288.818 €
Other Projects and Initiatives	100.223 €
Stakeholder meetings	44.500 €
Management and Administration	94.357 €

1.3 Costs per Programme / Project

Costs 2018	
Total Costs	527.898 €
Programmes and Services	389.041 €
MPE Scholarship and Capacity Building Programme	46.550 €
Access	42.461 €
MPE Advocate Development Programme	55.941 €
Annual General Meeting	143.866 €
Other Projects and Initiatives	100.223 €
Roadmap on Industry/Engagement&Legal Agreements	
AL Amyloidosis activities	
H2020 CARAMBA	
H2020 MM-PREDICT	
IMI HARMONY	
HEM-CAB	
European Policy and regulatory	
Information and education resources	
Advocacy and community collaboration	
Amgen Patient Preference Collaboration	
Myeloma CAB	
Scientific meetings	
Stakeholder meetings	44.500 €
Management and Administration	94.357 €

1.4 Hem-CAB initiative

HEM-CAB is an initiative of the European haematology patient community. Since it has no legal entity of its own, the MPE Board agreed that this initiative would be hosted by MPE formally. This means that the initiative is not part of the MPE budget. The income received for Hem-CAB is clearly firewalled for Hem-CAB activity and the expenditure, too, so MPE is not allowed to spend this for its own programmes. Furthermore, MPE has opened a separate Hem-CAB bank account, to ensure that all the Hem-CAB related funding and expenses are clearly separate from those of MPE.

Myeloma Patients Europe AISBL

Avenue Louise 149/24
1050 Brussels, Belgium

www.mpeurope.org - info@mpeurope.org

 facebook.com/mpeurope

 [@MyelomaEurope](https://twitter.com/MyelomaEurope)