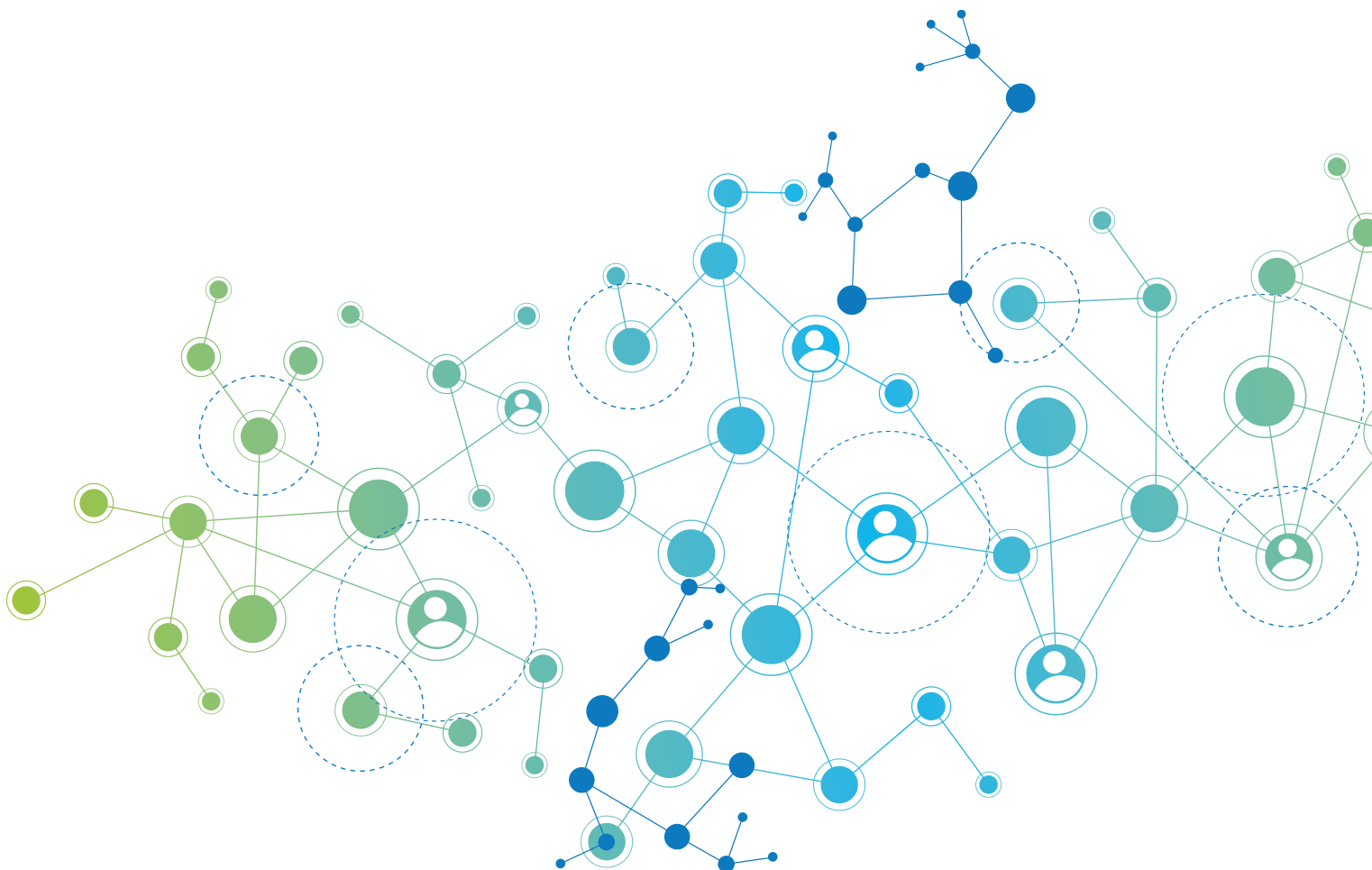


# 2019 Financial Report



# 1 Financial report

MPE is an organisation supported by public and private funding. Most of the financial resources that MPE has, comes from pharmaceutical companies. In addition, MPE receives public funding from its involvement in IMI and Horizon 2020 projects.

## 1.1 Sponsors 2019

<b>Income 2019</b>	<b>Income Jan-Dec</b>
<b>Subtotal Operative Income</b>	<b>775.090 €</b>
<b>Industry Funding</b>	<b>711.602 €</b>
Bristol Myers Squibb	50.520 €
Celgene	122.644 €
Janssen	122.456 €
Novartis	35.000 €
Takeda	112.798 €
Amgen Patient Preference Study	38.266 €
Amgen	112.859 €
Karyopharm	5.899 €
Sanofi	75.860 €
Tesaro Bio	25.000 €
Astra Zeneca	300 €
Oncopeptides	10.000 €
<b>Public Funding and Other income</b>	<b>63.488 €</b>
Horizon 2020 Caramba	21.230 €
Horizon 2020 MMPredict	6.736 €
IMI Harmony	11.978 €
Other Income	23.544 €

## 1.2 Income vs. costs 2019

<b>Income 2019</b>	
<b>Balance</b>	<b>190.842 €</b>
<b>Income</b>	<b>775.090 €</b>
<b>Costs</b>	<b>584.248 €</b>
Programmes	337.604 €
Other Projects and Initiatives	88.641 €
Public funded Projects	31.570 €
Management, Administration, Communication	126.433 €

# Myeloma Patients Europe AISBL

Avenue Louise 143/4  
1050 Brussels, Belgium

[www.mpeurope.org](http://www.mpeurope.org) - [info@mpeurope.org](mailto:info@mpeurope.org)

**Follow us:**



[@mpeurope](https://www.facebook.com/mpeurope)



[@MyelomaEurope](https://twitter.com/MyelomaEurope)

