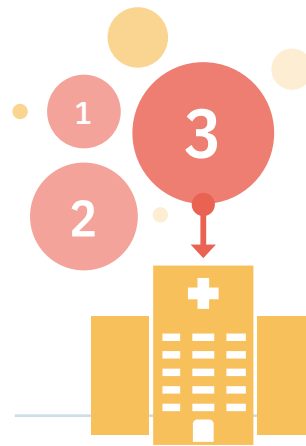


# THE MYELOMA DIAGNOSIS CHALLENGE

## DID YOU KNOW?...



Symptoms of myeloma are **non-specific** (e.g. back pain and fatigue), making it **difficult to recognise** in primary care



Myeloma patients are likely to present **3 or more times** in primary care before being referred

The median time to diagnosis is **108.6 days** with 25% of patients waiting longer than **8 months**

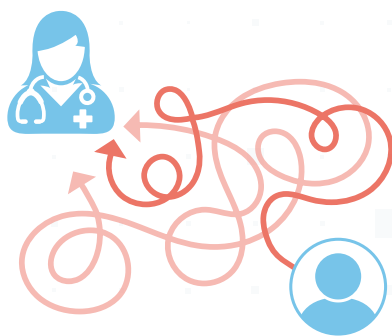


On average, patients experience symptoms for about

**1 month**

before seeking help and 25% of patients wait more than

**3 months**



Patients experience **lengthy** and **confusing** pathways to diagnosis



A UK study found that **34%** of patients were diagnosed via emergency settings

Delayed diagnosis can **negatively impact** the quality of life and the disease-free survival of myeloma patients



**MPe**  
Myeloma  
Patients  
Europe

YEAR OF ACTION ON  
**DIAGNOSIS**