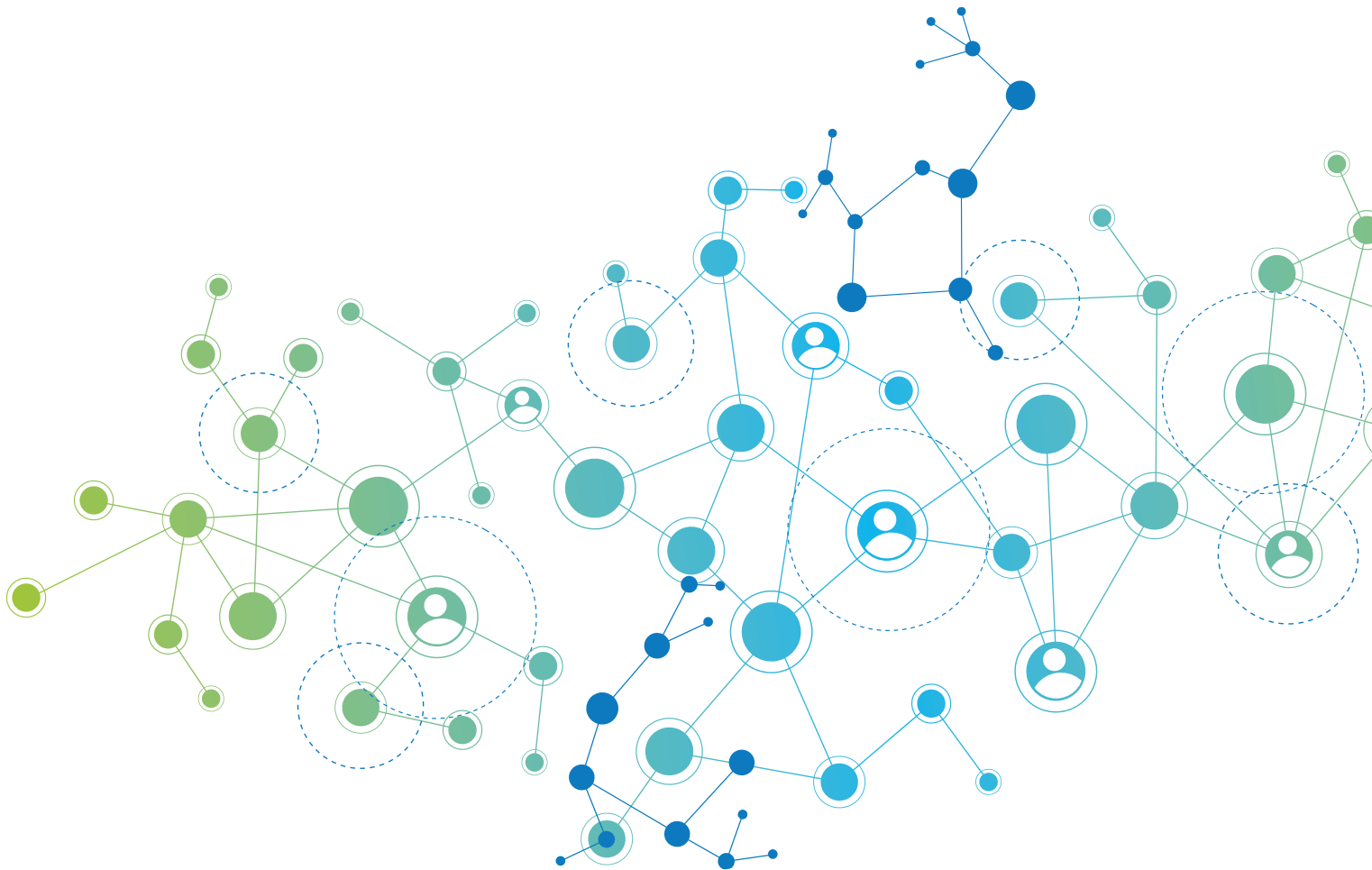


2020 Financial Report



Financial report

MPE is an organisation supported by public and private funding. Most of the financial resources that MPE has, comes from pharmaceutical companies. In addition, MPE receives public funding from its involvement in IMI and Horizon 2020 projects.

1.1 Sponsors 2020

| Income 2020 | Received Funding / Income |
|--|------------------------------|
| | Jan - Dec |
| Subtotal Operative Income | 1.015.299 € |
| Industry Funding | |
| Amgen | 103.308 € |
| Astra Zeneca | 10.000 € |
| Bristol Meyers Squibb | 221.226 € |
| Celgene | 525 € |
| GSK | 141.000 € |
| Gilead | - € |
| Janssen | 93.268 € |
| Karyopharm | 55.000 € |
| Mundibiopharma | 7.000 € |
| Novartis | 65.000 € |
| Oncoceptides | 15.000 € |
| Pfizer | 65.000 € |
| Roche | 53.000 € |
| Sanofi | 65.380 € |
| Takeda | 97.220 € |
| Total Industry Funding | 991.927 € |
| Public Funding and Other Income | |
| Horizon 2020 Caramba | - € |
| Horizon 2020 MMPredict | - € |
| IMI HARMONY | 5.557 € |
| IMI SISAQoL | - € |
| Other Income Non-Industry | 17.816 € |
| Total Public Funding and Other Income | 23.372 € |

1.2 Income vs. Costs 2020

| 2020 | Jan - Dec |
|--------------------------------|--------------------|
| Income | 1.015.299 € |
| Costs | 835.531 € |
| Programmes | 422.240 € |
| Other Projects and Initiatives | 128.968 € |
| Public funded Projects | 34.814 € |
| Communication | 44.266 € |
| Management, Administration | 205.243 € |
| Balance | 179.768 € |

Myeloma Patients Europe AISBL

Avenue Louise 143/4
1050 Brussels, Belgium

www.mpeurope.org - info@mpeurope.org

Follow us:



[@mpeurope](https://www.facebook.com/mpeurope)



[@MyelomaEurope](https://twitter.com/MyelomaEurope)

